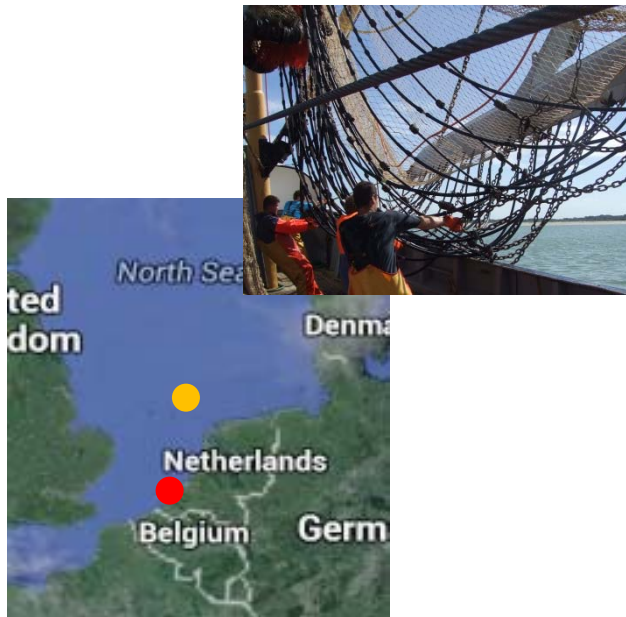

Socio-economic aspects of technological innovation

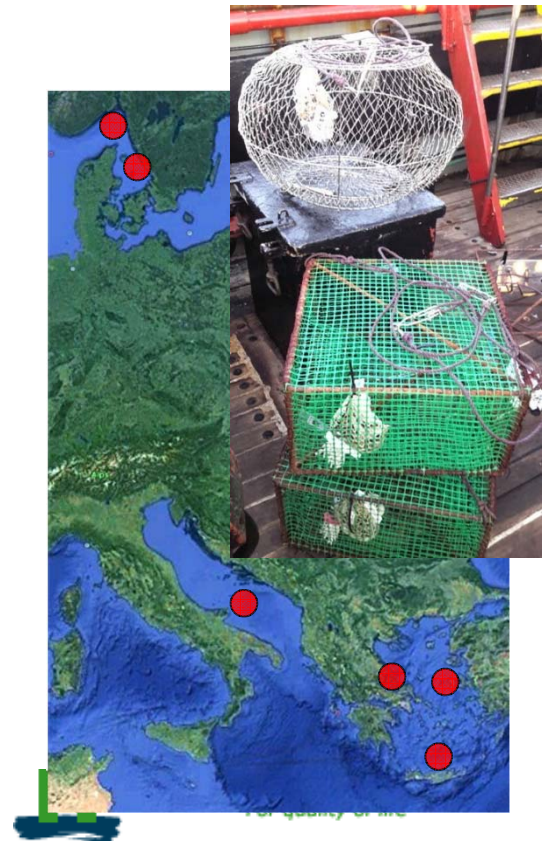
BENTHIS final symposium, 14th June 2017, Brussels,
Katell Hamon

From development to uptake of technological innovation

From mechanic to electric stimulations



From active to passive gears



From demersal to semi-pelagic otterboards



How to successfully develop innovative gears?

- From interviews and studies :
 - 1) Involve industry: user-friendliness, gap with current gears
 - 2) Give the industry the means to think out of the box (allow testing of “illegal” gears)
 - 3) Have common goals e.g.:
 - reduction of benthic impact → reduction of fuel use
 - reduction of bycatch → less sorting time

How to improve uptake of technology?

Investment theory



But economic profitability not sufficient

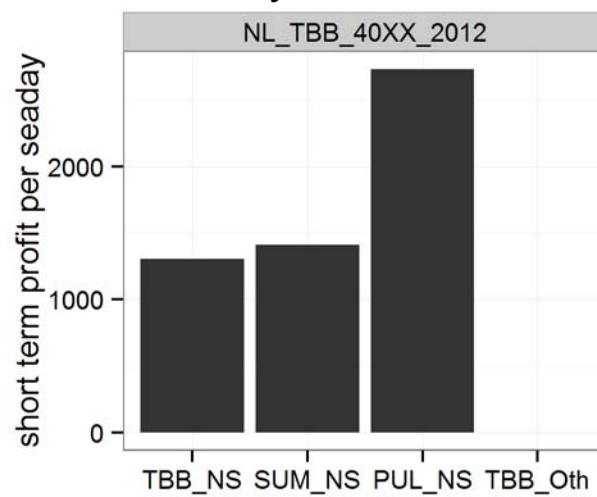
Factors influencing investment

- Economic

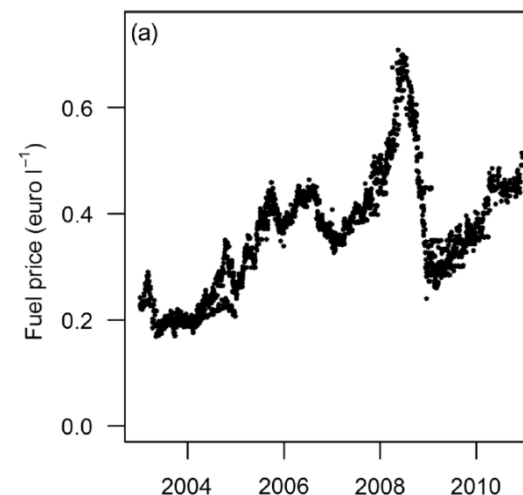
Access to loans



Profitability



Fuel costs



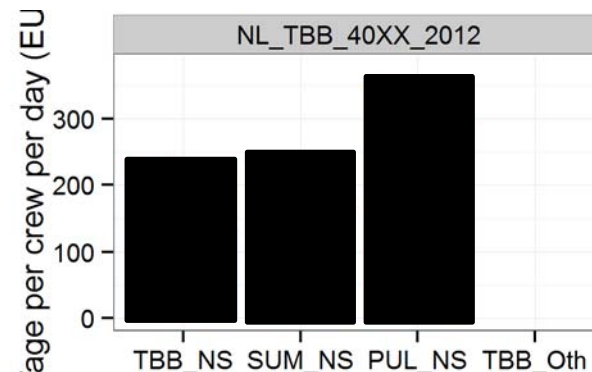
Source: Poos et al 2013

Access to subsidies



EMFF OPERATIONAL
PROGRAMME
2014-2020

Crew salaries



Factors influencing investment

- Social



Maintain high catch
BENTHIS



Knowledge exchange platforms



Future of the company



Factors influencing investment

- Technological



Factors influencing investment

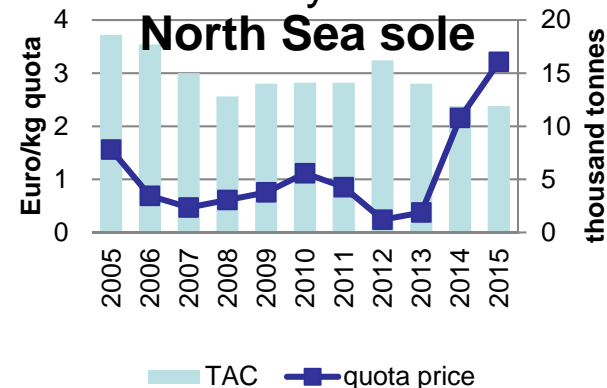
- Regulatory

Room for experimentation



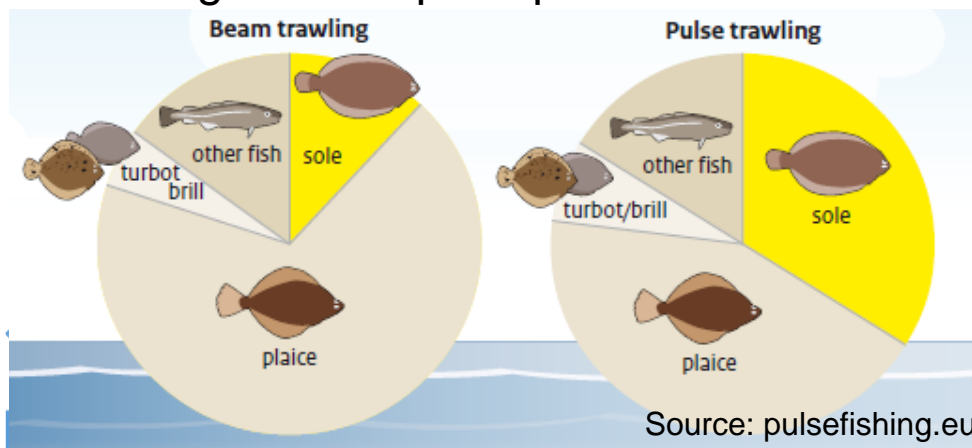
Better selectivity

Access to fishery



Source: WUR

Matching current quota portfolio



Tighter controls

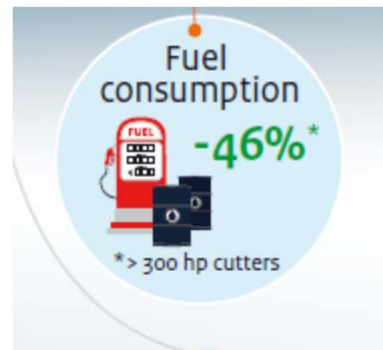


Legal support



Factors influencing investment

- Environmental



Take home message

- Economic profitability necessary
- Information sharing *Involve scientists* sufficient
- Technological factors *Involve gear developers*
- Influence of the (*Involve fishers*)
- Regulation *Involve decision makers*
- Environmental issues *Involve the rest of society*

Acknowledgements

- This work was done with the contribution of Sara Bonanomi, Monica Cariola, Olivier Guyader, Matteo Ferraris, Greta Falavigna, Frank Jensen, Arne Kinds, Claire Macher, J. Rasmus Nielsen, Emilio Notti, Elena Pagliarino, Andrea Pronti, Ole Ritzau Eigaard, Antonello Sala, Vera Scherders, Selcuk Uzmanoglu, Katrien Verlé, Birgit de Vos, Mustafa Zengin, Roberto Zoboli



Centre for Environment
Fisheries & Aquaculture
Science



PRIFYSGOL
BANGOR
UNIVERSITY



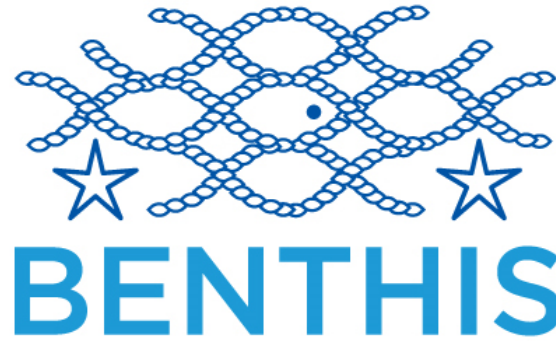
WITTRUP SEAFOOD A/S



©2012 photo Georges Kailis www.bateau.fr.com



Saharudin Angel Luis Guter Moreira
Lorient, 13 October 2011
www.shipspotting.com



UNIVERSITY OF
COPENHAGEN

