

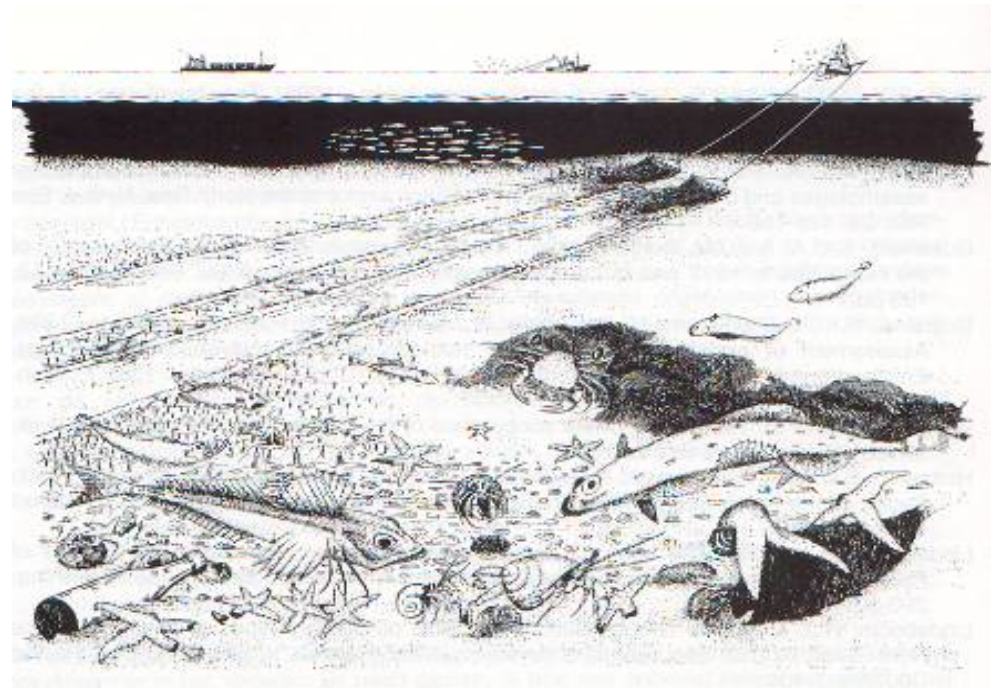
# Management innovations: A Fisheries Credit System using Seafloor Integrity Quota to support Smart fishing practices

Gerjan Piet

# MSFD

- “**Seafloor integrity** is at a level that ensures that the structure and functions of the ecosystems are safeguarded and benthic ecosystems, in particular, are not adversely affected”.
- In order to achieve “**Good Environmental Status**” (GES), two criteria need to be considered in relation to “physical disturbance”:

- D6C2: Spatial extent and distribution of physical disturbance pressures on the seabed. ”
- D6C3: Spatial extent of each habitat type which is adversely affected

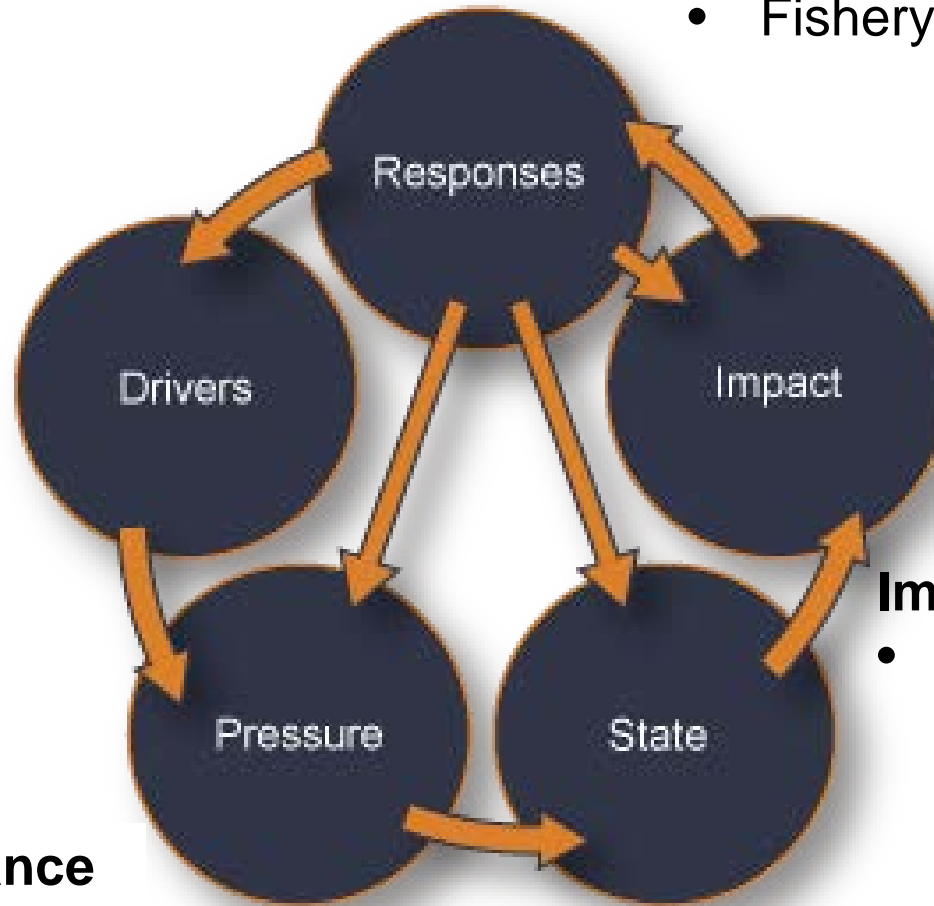


# DPSIR

## Response: Management

- Fishery Credit System

## Fishing



## Impact of the seafloor

- Change in benthic community

## Physical disturbance to the seafloor

- Footprint of the gear
- Distribution and intensity of fishing activities

## State of the seafloor

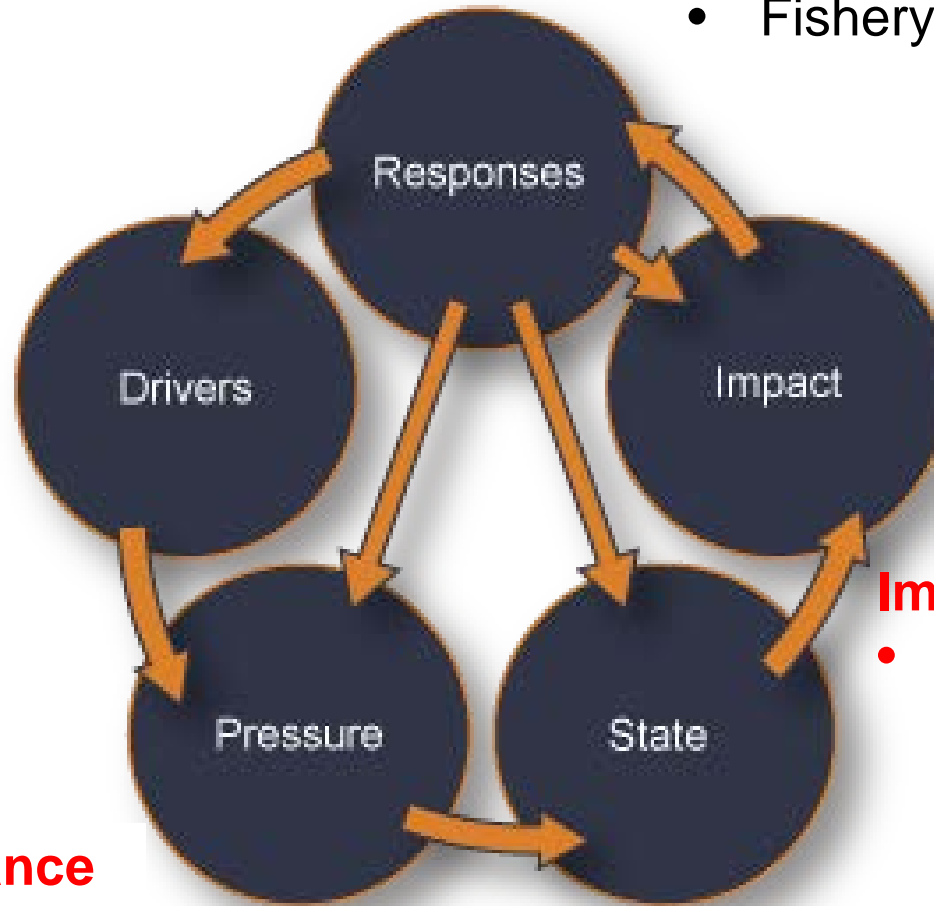
- Habitats and their distribution
- Benthic community and its sensitivity

# DPSIR

## Response: Management

- Fishery Credit System

**Fishing**



## Impact of the seafloor

- Change in benthic community

## Physical disturbance to the seafloor

- Footprint of the gear
- Distribution and intensity of fishing activities

## State of the seafloor

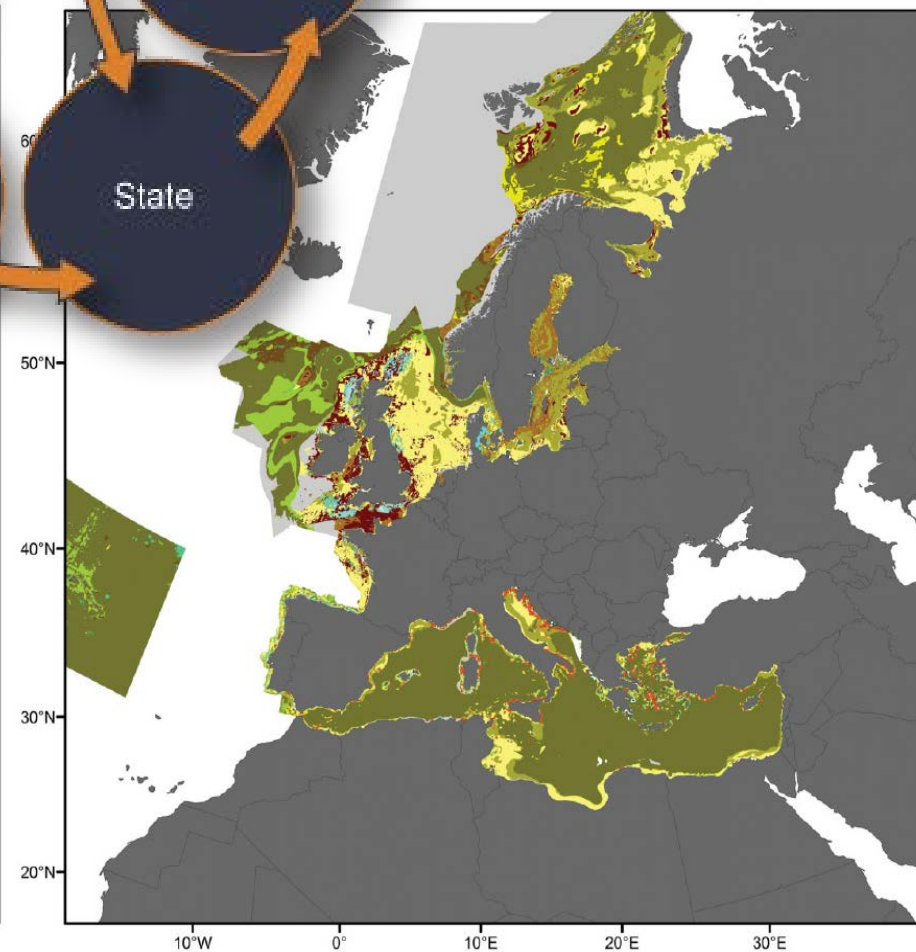
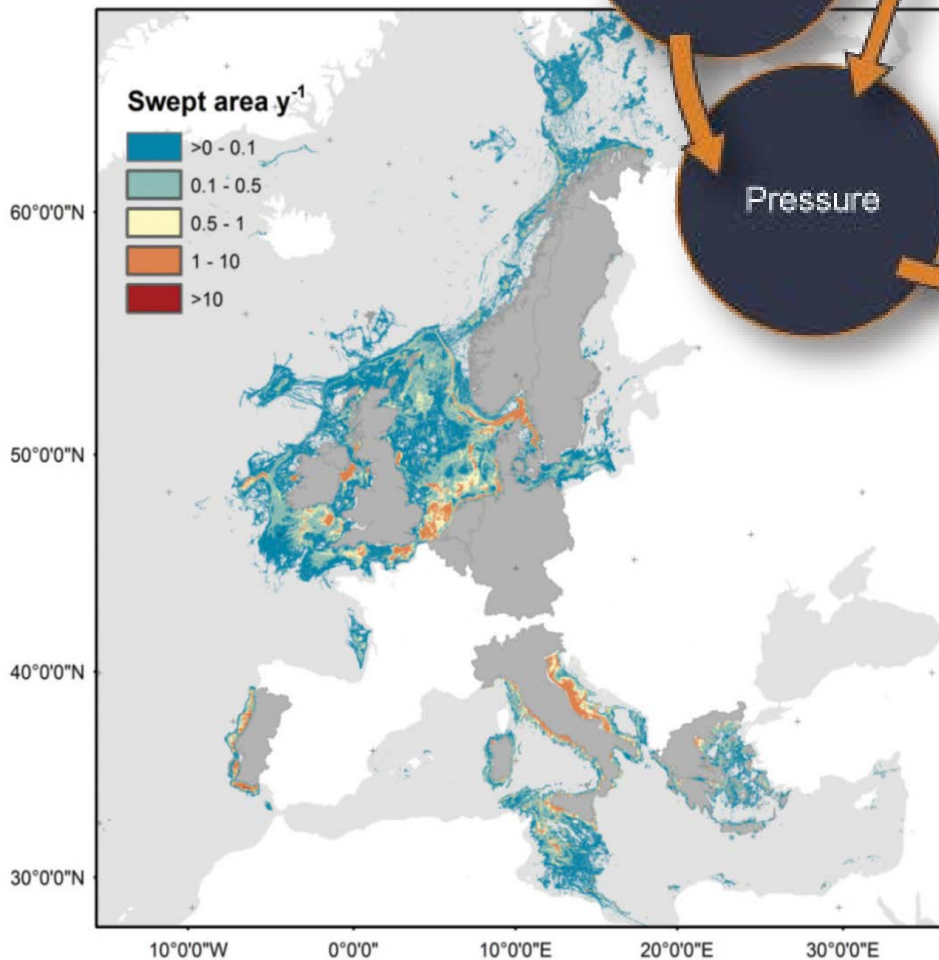
- Habitats and their distribution
- Benthic community and its sensitivity

# Fishing Impact and Seafloor Integrity



# P ressure

# S tate



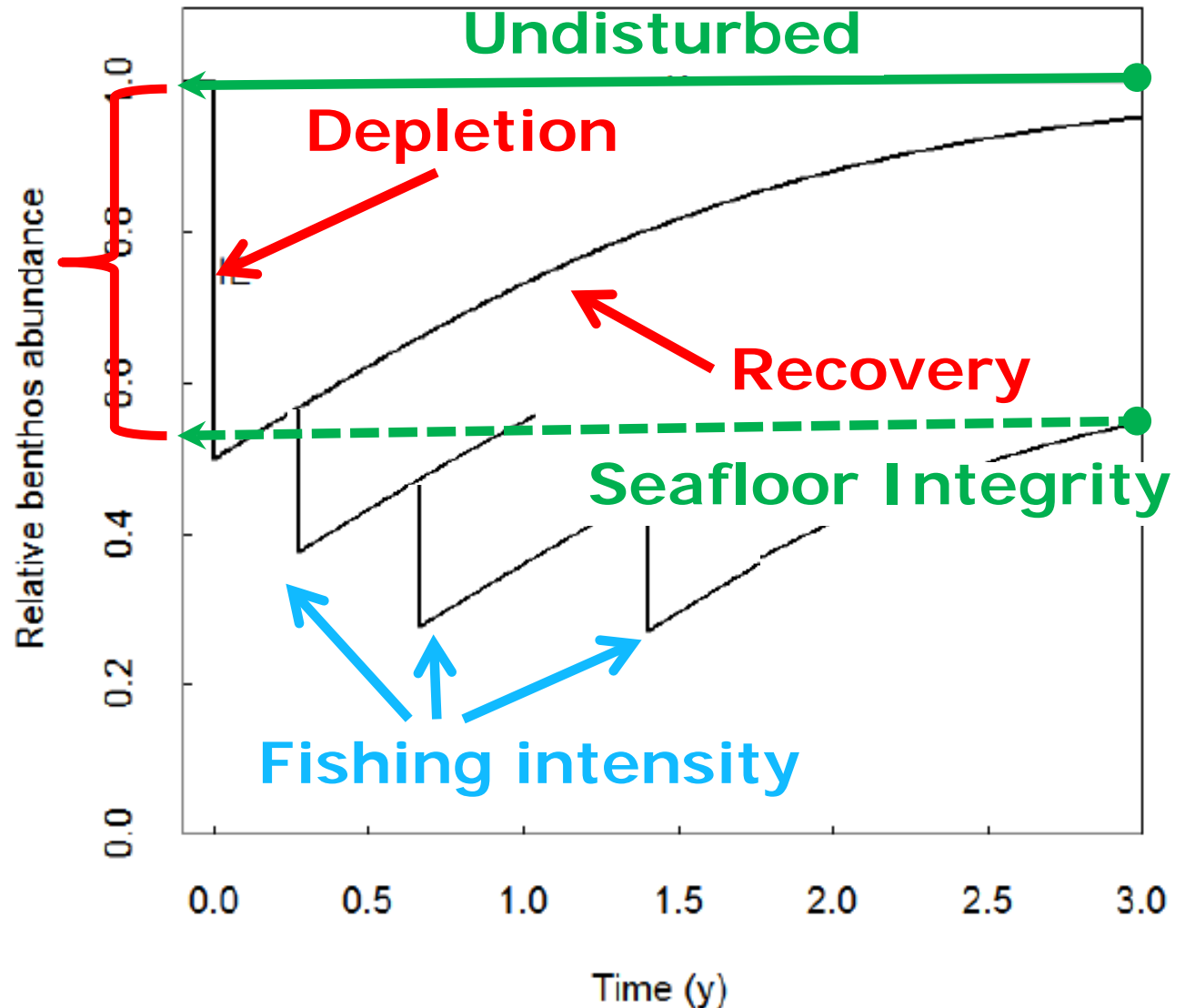
# Seafloor integrity and fishing impact

## Meta-Analysis: Impact

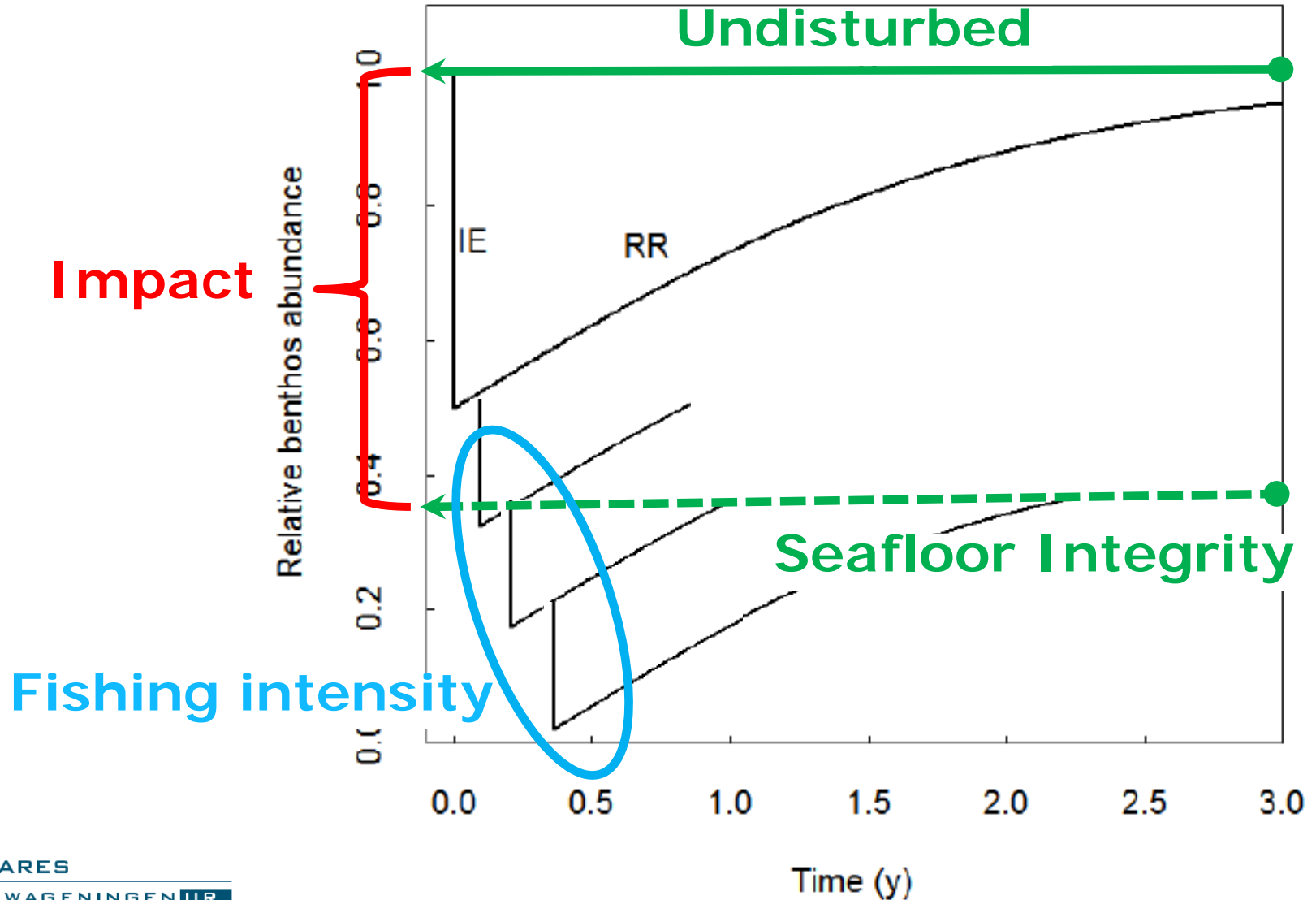
Systematic review of the literature of trawling impact studies:

**Before/After,  
Control/Impact**

Provides status of the seafloor relative to undisturbed



# Seafloor integrity and fishing impact



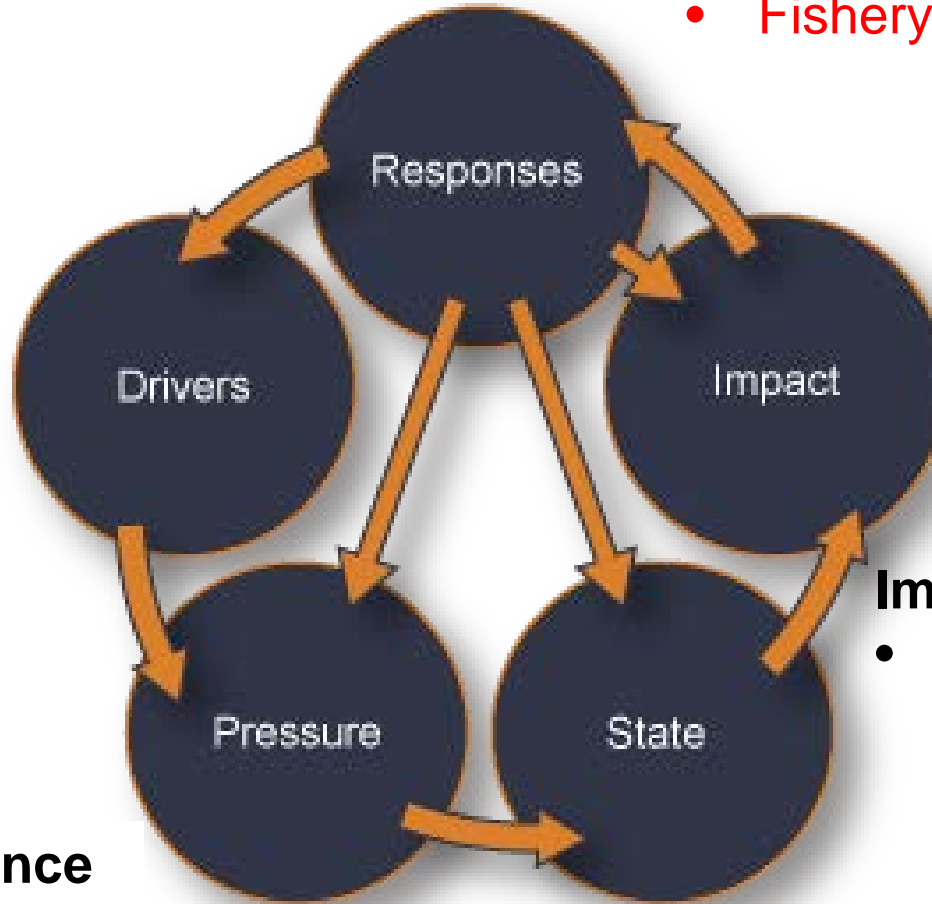


# DPSIR

**Response: Management**

- Fishery Credit System

**Fishing**



**Impact of the seafloor**

- Change in benthic community

**Physical disturbance to the seafloor**

- Footprint of the gear
- Distribution and intensity of fishing activities

**State of the seafloor**

- Habitats and their distribution
- Benthic community and its sensitivity

# Management (innovations)

- MPAs
  - VMEs
  - N2000
- Technical measures
  - Beam → Pulse trawl
- Fisheries Credit System



# Fishery Credit Systems (FCS)

## Incentivizing change in fishers behaviour



# Fishers behaviour: What determines where to go fishing?

**Catch**



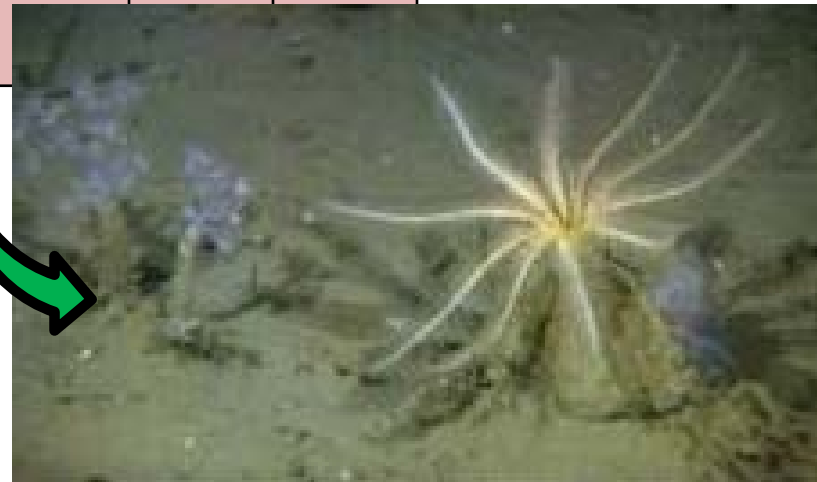
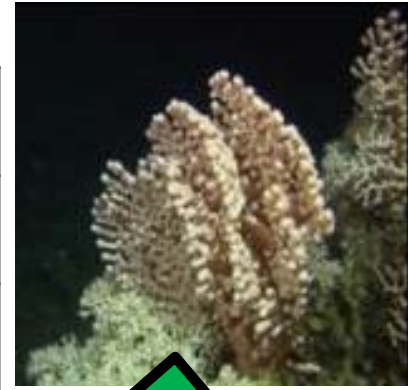
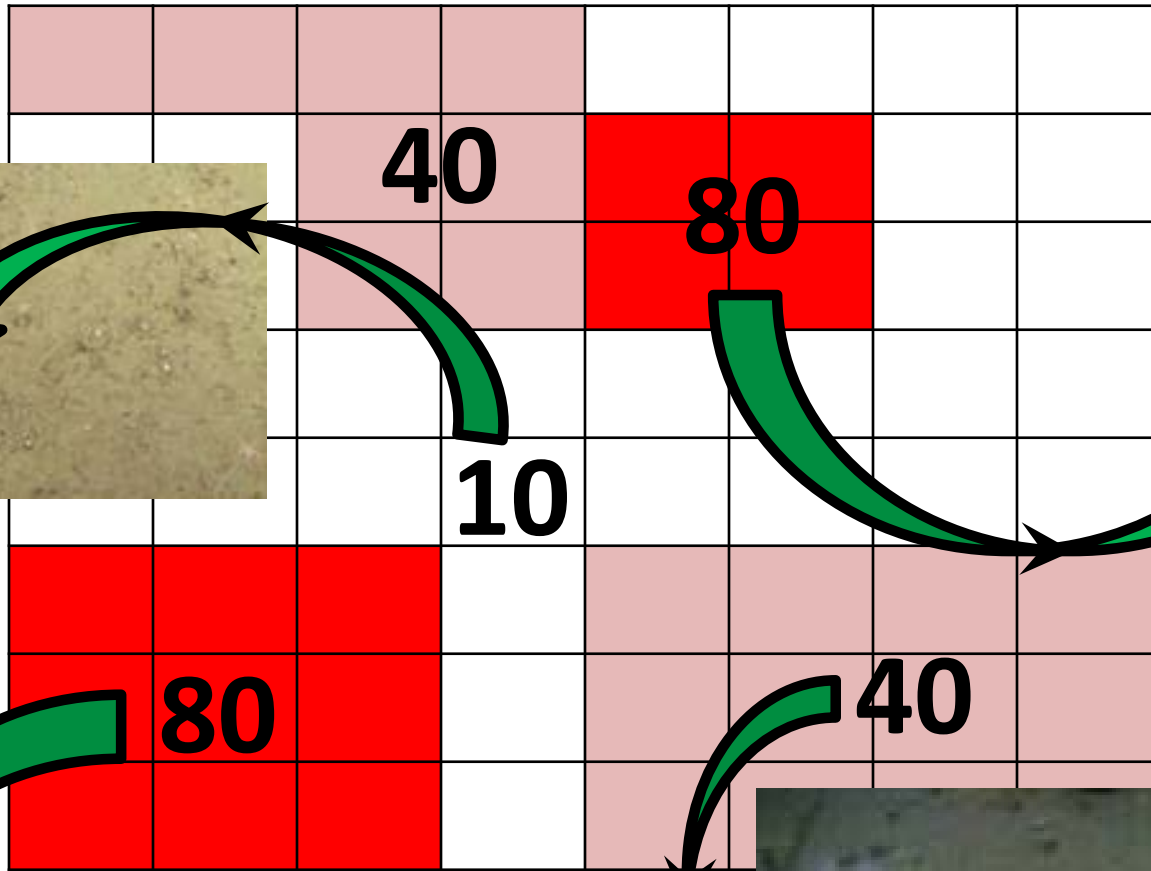
**Revenue**

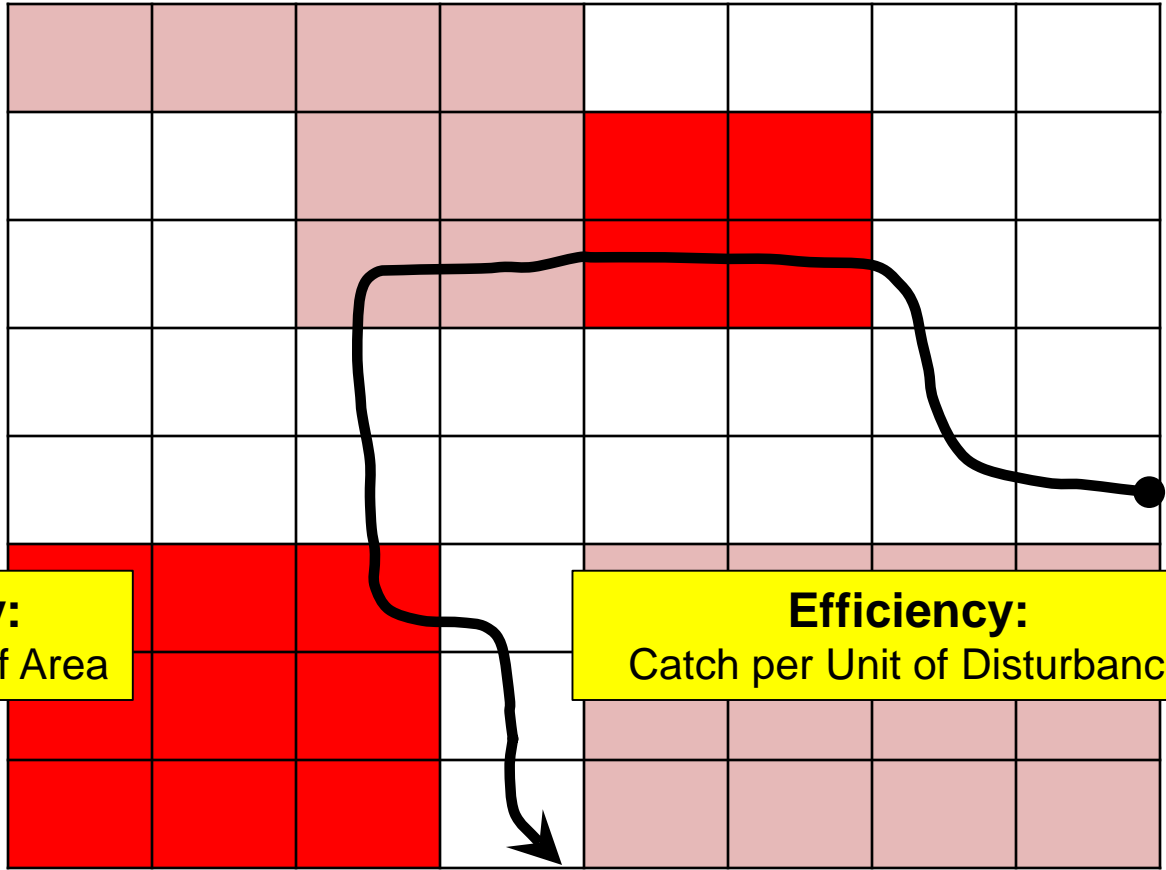
**Efficiency**  
=  
Catch or Revenue  
relative to  
Pressure or Impact



**Seafloor Disturbance**

# Seafloor Integrity Quota



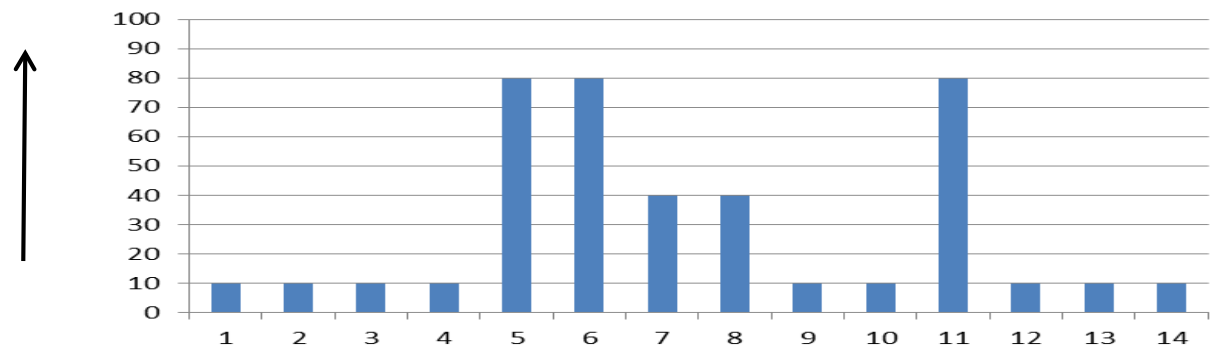


**Efficiency:**  
Catch per Unit of Area

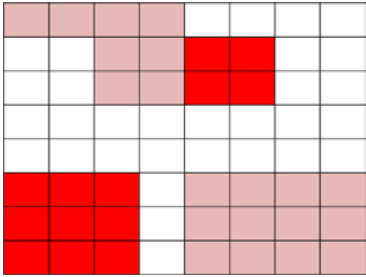
**Efficiency:**  
Catch per Unit of Disturbance

Seafloor Integrity Quota

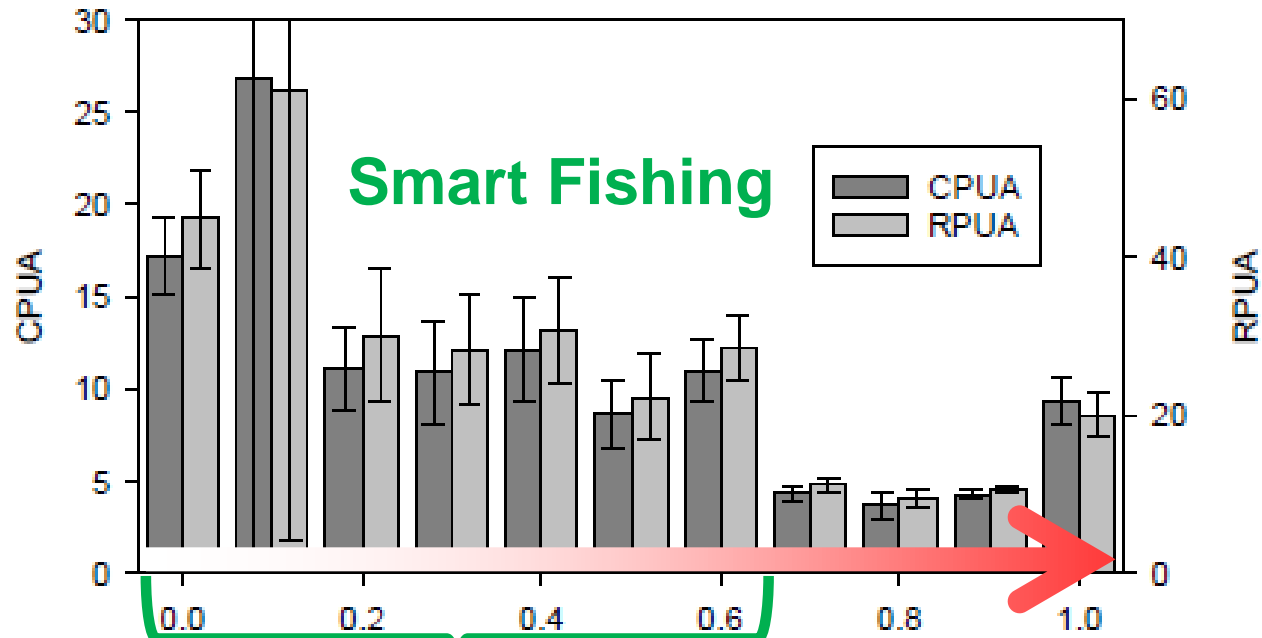
Disturbance



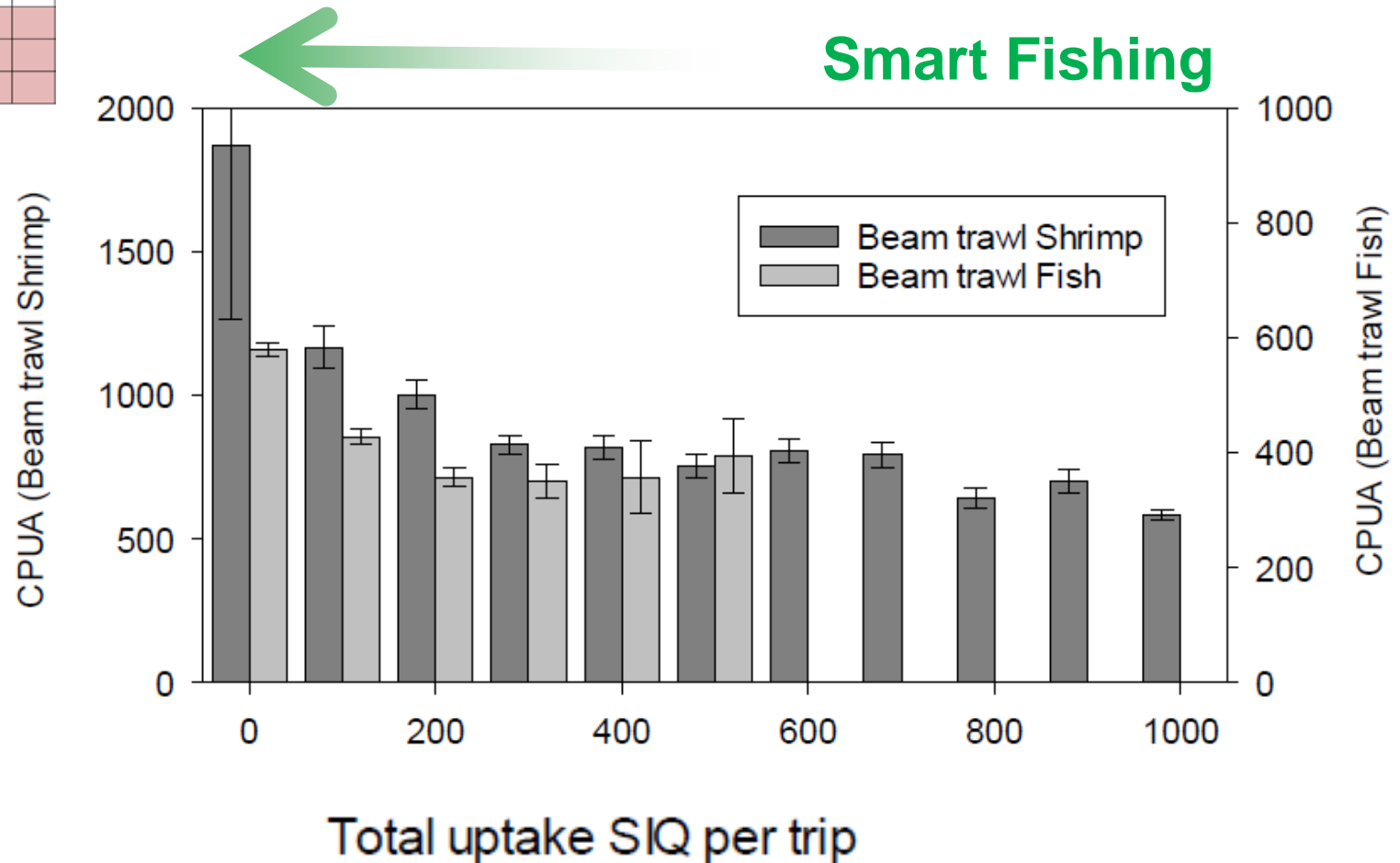
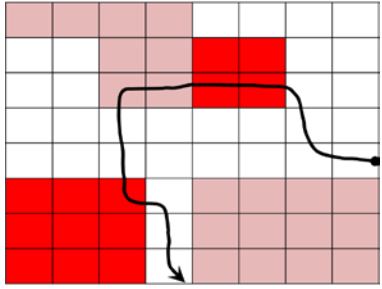
**Efficiency:**  
 Catch/Pressure  
 =  
 Catch per Unit of Area



**Efficiency:**  
 Catch/Impact  
 =  
 Catch per Unit of Disturbance



# Efficiency (Catch per Unit of Area) per trip



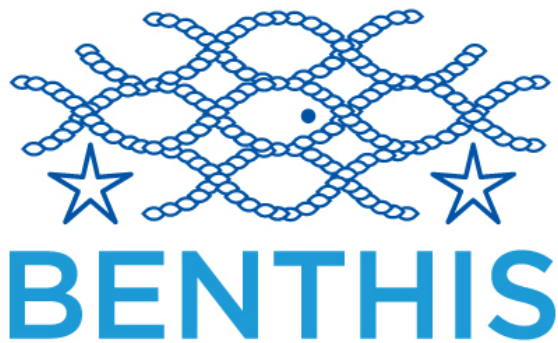


# Summary/Conclusions

- BENTHIS methodology to assess **State** (=seafloor integrity) and **Pressure** (= swept area) also allows an estimate of **Impact** due to physical disturbance (=uptake of Seafloor Integrity Quota SIQ)
  - Fishing Pressure = area disturbed
  - Fishing Impact = area disturbed \* recovery time
- **Efficiency** is a measure of performance of a fishing fleet or vessel in terms of seafloor conservation and can be expressed as:
  - Catch per Unit of Area (CPUA)
  - Catch per Unit of Disturbance (CPUD)
- Efficiency is highest in areas where seafloor integrity is low and hence SIQ uptake is low. Application of a **Fisheries Credit System** (FCS) should therefore result in an increased efficiency of the fishing fleet (= less disturbance for the same catch).



1 4 9 5



WITTRUP SEAFOOD A/S

